

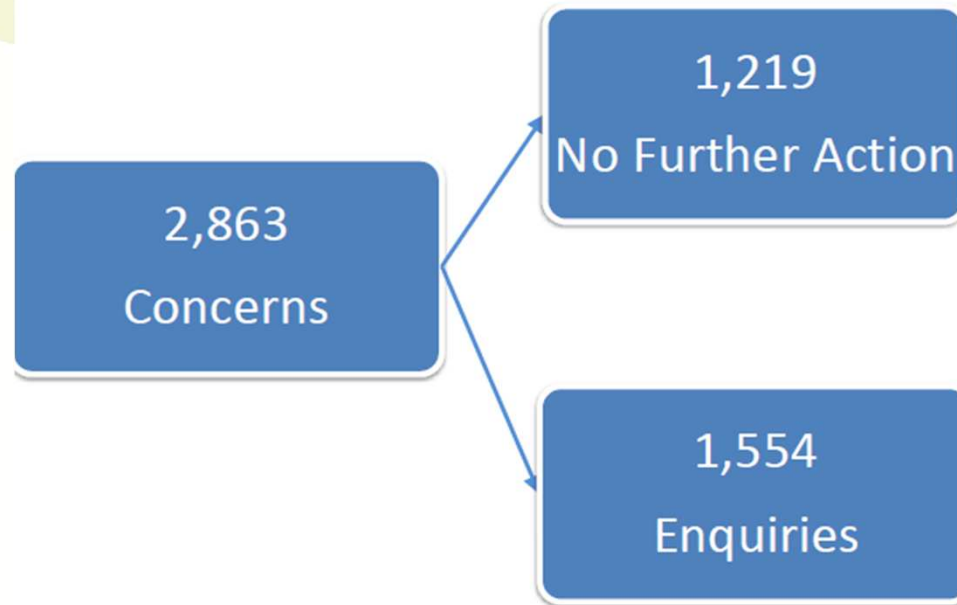
Adult Safeguarding

Presented by

Glen Garrod ~ DASS

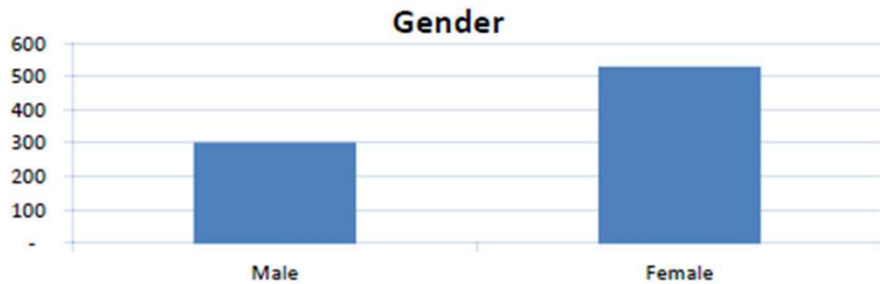
Barry Earnshaw ~ LSAB Vice Chair

2015/2016 Statistics to end of December

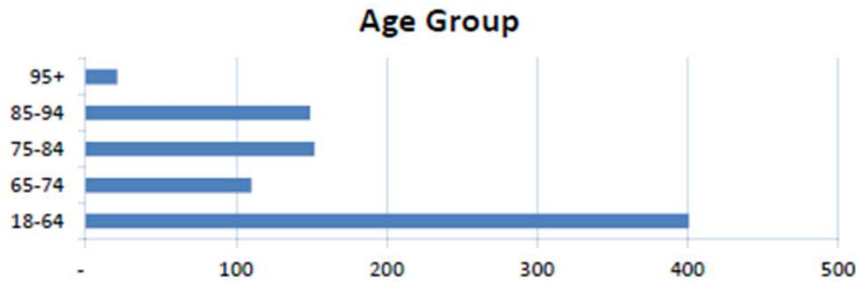


Q1/Q2/Q3 Figures 2015/16

How does that breakdown?



Based on 841 LCC led enquiries



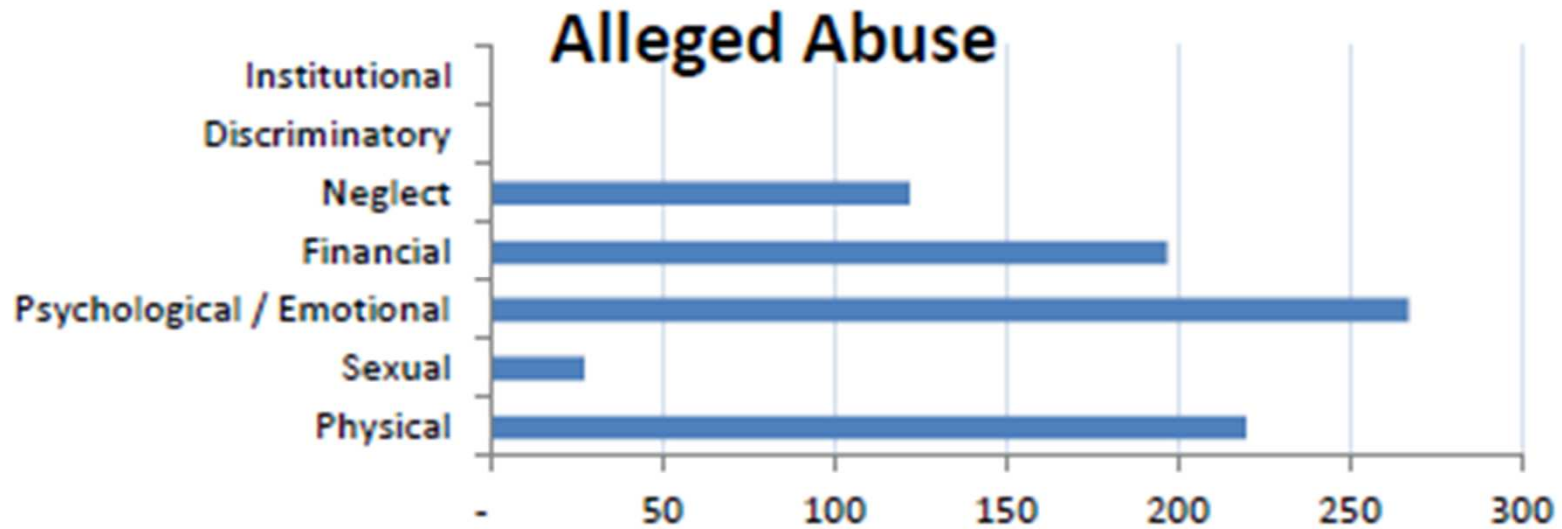
Enquiries by other organisations instigated by LCC ~ Total for the end of quarter 3 is 713

LCC led enquiries are 14% higher at the end of Q3, 841, compared to last year

Care Act updated Definitions of Abuse

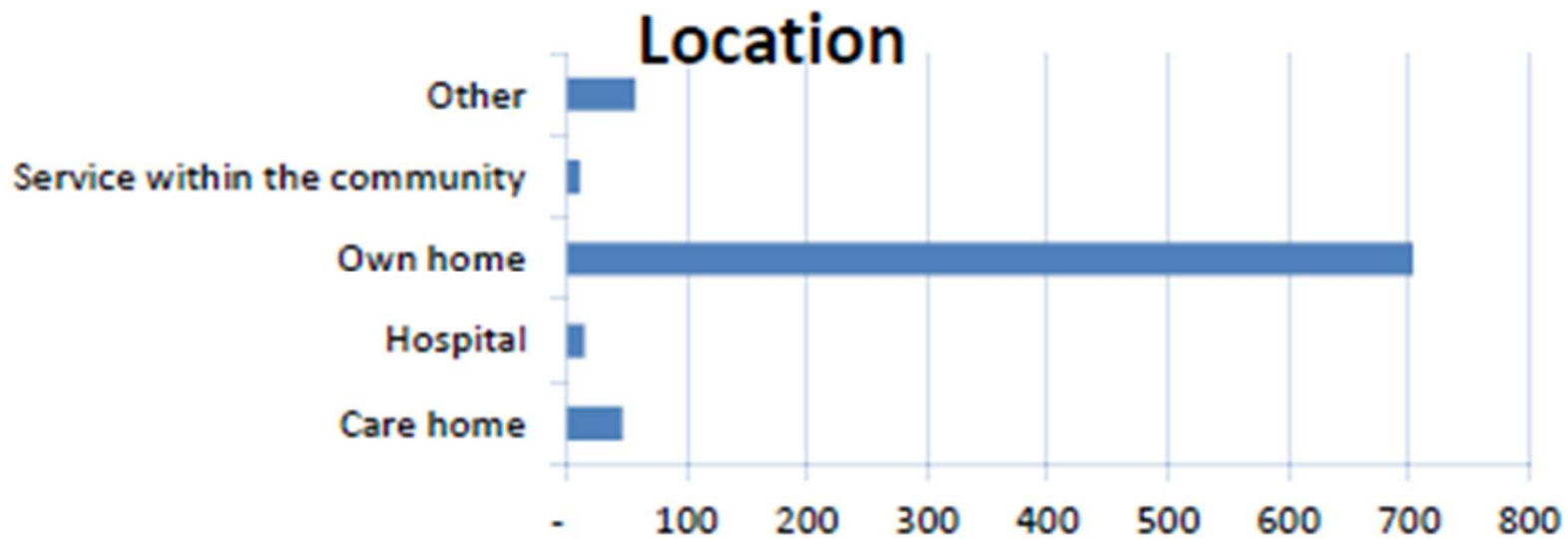
- **Physical abuse** – including assault, hitting, slapping, pushing, misuse of medication, restraint or inappropriate physical sanctions.
- **Domestic violence** – including psychological, physical, sexual, financial, emotional abuse; so called ‘honour’ based violence.
- **Sexual abuse** – including rape, indecent exposure, sexual harassment, inappropriate looking or touching, sexual teasing or innuendo, sexual photography, subjection to pornography or witnessing sexual acts, indecent exposure and sexual assault or sexual acts to which the adult has not consented or was pressured into consenting.
- **Psychological abuse** – including emotional abuse, threats of harm or abandonment, deprivation of contact, humiliation, blaming, controlling, intimidation, coercion, harassment, verbal abuse, cyber bullying, isolation or unreasonable and unjustified withdrawal of services or supportive networks.
- **Financial or material abuse** – including theft, fraud, internet scamming, coercion in relation to an adult’s financial affairs or arrangements, including in connection with wills, property, inheritance or financial transactions, or the misuse or misappropriation of property, possessions or benefits.
- **Modern slavery** – encompasses slavery, human trafficking, forced labour and domestic servitude. Traffickers and slave masters use whatever means they have at their disposal to coerce, deceive and force individuals into a life of abuse, servitude and inhumane treatment.
- **Discriminatory abuse** – including forms of harassment, slurs or similar treatment; because of race, gender and gender identity, age, disability, sexual orientation or religion
- **Organisational abuse** – including neglect and poor care practice within an institution or specific care setting such as a hospital or care home, for example, or in relation to care provided in one’s own home. This may range from one off incidents to on-going ill-treatment. It can be through neglect or poor professional practice as a result of the structure, policies, processes and practices within an organisation.
- **Neglect and acts of omission** – including ignoring medical, emotional or physical care needs, failure to provide access to appropriate health, care and support or educational services, the withholding of the necessities of life, such as medication, adequate nutrition and heating.
- **Self-neglect** – this covers a wide range of behaviour neglecting to care for one’s personal hygiene, health or surroundings and includes behaviour such as hoarding.

How does that breakdown?



Based on 841 LCC led enquiries

How does that breakdown?



Based on 841 LCC led enquiries

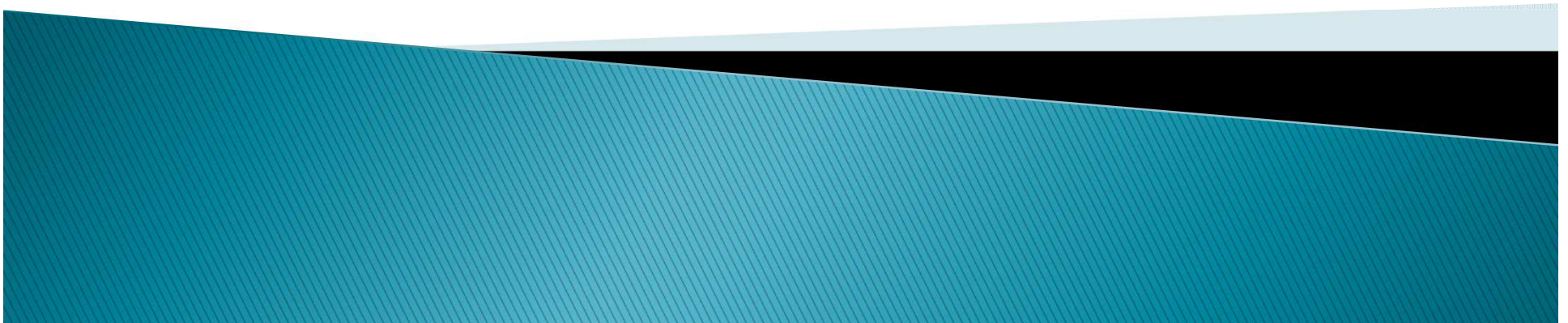
Council Business Plan Measures (extract)

| | | | |
|---------------------|-----|--|------|
| Keeping People Safe | ↑ 👍 | % of people supported by an advocate where assessed as lacking capacity | 100% |
| Keeping People Safe | ↓ 👍 | % of enquiries received where the source of risk is a service provider **New** | 13% |
| Keeping People Safe | ↑ 👍 | % of completed safeguarding enquiries where the result of management action taken is risk reduced or removed | 56% |



Lincolnshire
Safeguarding
Adults Board

Lincolnshire Safeguarding Adults Board





Lincolnshire
Safeguarding
Adults Board

Free Photoshop PSD file download - Reso

Who are we?

Lincolnshire Safeguarding Adults Board



CITY OF
Lincoln
COUNCIL

Lincolnshire Community Health Services **NHS**
NHS Trust



NHS
Lincolnshire East
Clinical Commissioning Group



NHS
South West Lincolnshire
Clinical Commissioning Group

NHS
South Lincolnshire
Clinical Commissioning Group



Lincolnshire Partnership **NHS**
NHS Foundation Trust

United Lincolnshire Hospitals **NHS**
NHS Trust



NHS
Lincolnshire West
Clinical Commissioning Group

Role of the Board

The Lincolnshire Safeguarding Adults Board acts within the framework of the law and statutory guidance. The prime consideration of LSAB at this time will be to fulfil multi-agency responsibilities in relation to the protection of adults at risk from abuse and neglect in line with the requirements made in the Care Act 2014.



Care Act 2014 (Chapter 23, Part 1, Care and Support)

Section 43 Safeguarding Adults Boards.

(1) Each local authority must establish a Safeguarding Adults Board (an “SAB”) for its area.

(2) The objective of an SAB is to help and protect adults in its area in cases of the kind described in section 42(1).

(3) The way in which an SAB must seek to achieve its objective is by co-ordinating and ensuring the **effectiveness** of what each of its members does.





Statutory Guidance

The SAB has a strategic role that is greater than the sum of the operational duties of the core partners. It oversees and leads adult safeguarding across the locality and will be interested in a range of matters that contribute to the prevention of abuse and neglect.



Core Duties

1. It **must** publish a strategic plan for each financial year that sets how it will meet its main objective and what the members will do to achieve this. The plan must be developed with local community involvement, and the SAB must consult the local Healthwatch organisation. The plan should be evidence based and make use of all available evidence and intelligence from partners to form and develop its plan.
2. It **must** publish an annual report detailing what the SAB has done during the year to achieve its main objective and implement its strategic plan, and what each member has done to implement the strategy as well as detailing the findings of any Safeguarding Adults Reviews and subsequent action.
3. It **must** conduct any Safeguarding Adults Review in accordance with Section 44 of the Act.





Key Priorities (as defined in the Boards Strategy)

- ▶ Assurance ~ confirm what we do makes a difference
- ▶ Workforce ~ ensure a competent and capable workforce
- ▶ Collaboration ~ improve cross partner information sharing
- ▶ Making Safeguarding Personal ~ embed choice and control
- ▶ Community ~ improve public awareness of adult safeguarding



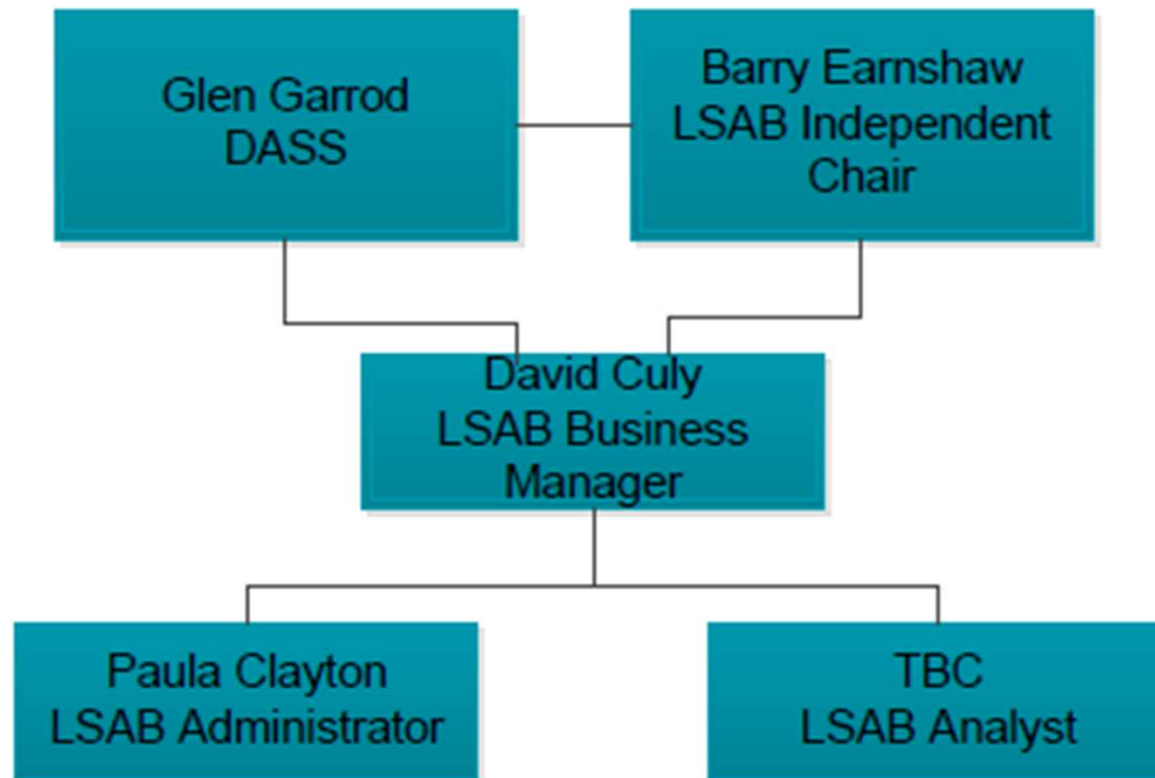
Board Funding

- ▶ The Board is currently funded jointly by the 3 statutory partners





Board Structure

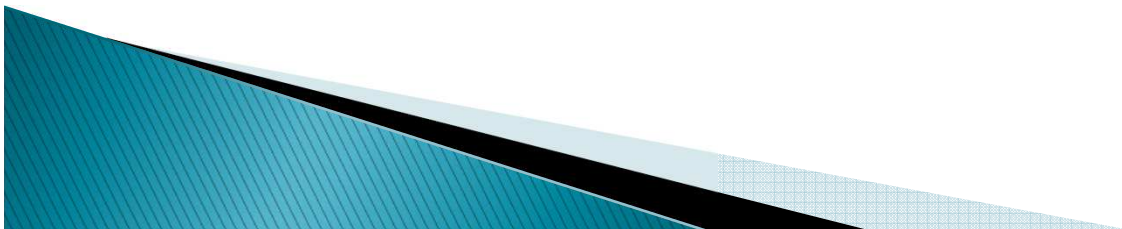




LSAB Contact Details

- ▶ David Culy ~ LSAB Business Manager
- ▶ david.culy@lincolnshire.gov.uk
- ▶ 01522 555111

- ▶ Paula Clayton ~ LSAB Administrator
- ▶ paulaE.clayton@lincolnshire.gov.uk
- ▶ 01522 555103



This page is intentionally left blank